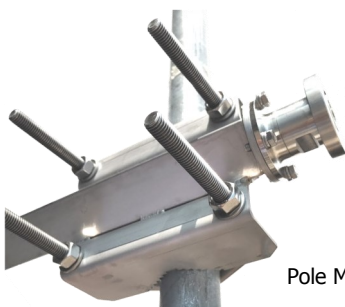


BAN0241A

FM Circular Polarization Dipole

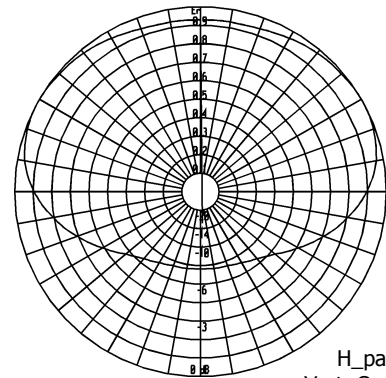
87.5÷108 MHz

Type	BAN0241ASX	BAN0241AFX
ELECTRICAL		
Frequency	87.5÷108 MHz	
Impedance	50 Ω unbalanced	
V.S.W.R. (R.L)	< 1.40 (-15.0 dB)	
Gain	-1.5 dBd	
Radiation Pattern	See Below	
Polarization	Circular	
Max power	See Below Table	
Input connector	7/16 (f) din , 7/8" EIA	
Lightning Protection	DC grounded	
MECHANICAL		
Connector material	Nickel plated Brass	
External parts material	Passivated Stainless Steel	
Internal lines material	Silver plated Aluminum	
Insulators material	Virgin PTFE	
Brackets and Hardware material	Stainless Steel	
Pressurization	Yes	
Survival wind velocity	240 km/h	
Wind load at 160 km/h Frontal	80 N	
Wind load at 160 km/h Lateral	305 N	
Dimensions	156 x 115 x 115 cm	
Weight (incl. Brackets)	13.0 kg	
Mounting System	See Below	

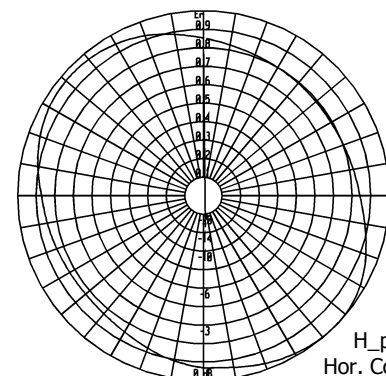


Pole Mount Ø 40÷114 mm

RADIATION PATTERN



H_pattern
Vert. Component



H_pattern
Hor. Component

Ordering Information

p/n	Input Connector	Max Power	Lay Out
BAN0241ASX.01	7/16 (f)	3.0 kW	dismountable
BAN0241ASX.02	7/8" EIA	5.0 kW	dismountable
BAN0241AFX.01	7/16 (f)	3.0 kW	fully welded
BAN0241AFX.02	7/8" EIA	5.0 kW	fully welded