

# BAN04FXA / BAN04SXA

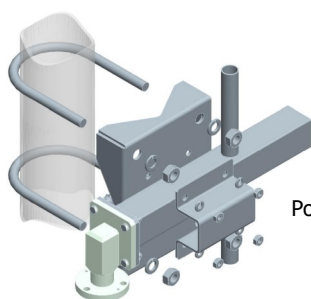
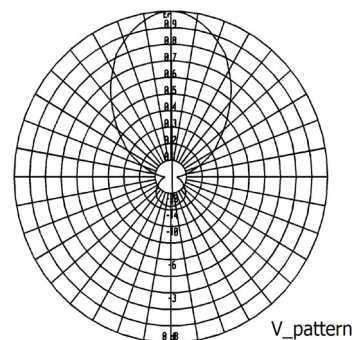
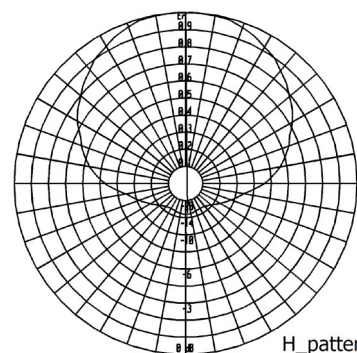
## Three Elements Yagi Antenna

146 ÷ 174 MHz

Type	BAN04FXA
<b>ELECTRICAL</b>	
Frequency	146 ÷ 174 MHz
Impedance	50 Ω Unbalanced
V.S.W.R. (R.L.)	< 1.40 (15.6 dB)
Gain	6.1 dBi
HPBW H-pattern	± 63°
HPBW V-pattern	± 32°
Polarization	Horizontal or Vertical
Max Power	See Below Table
Input Connector	N (f), 7-16 (f) din
Lightning Protection	DC Grounded
<b>MECHANICAL</b>	
Connector Material	Nickel Plated Brass
External Parts Material	Passivated Stainless Steel
Internal Lines Material	Polished Brass
Insulators Material	Virgin PTFE
Brackets and Hardware Material	Stainless Steel
Pressurization	Yes
Survival Wind Velocity	180 km/h
Wind load at 160 km/h Frontal	68 N
Wind load at 160 km/h Lateral	149 N
Dimensions	85 x 94 x 6 cm
Weight (incl. Brackets)	7.0 kg
Mounting System	See Below



### RADIATION PATTERN



Pole Mount Ø 60÷114 mm

### Ordering Information

p/n	Input Connector	Max Power	Lay Out
BAN04FXA.00	N (f)	100W	fully welded
BAN04FXA.01	7-16 (f) din	300W	fully welded
BAN04SXA.00	N (f)	100W	dismountable
BAN04SXA.01	7-16 (f) din	300W	dismountable