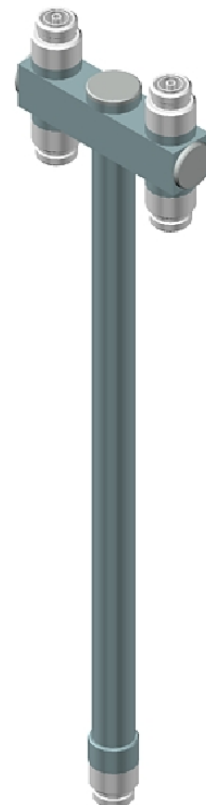


DIN 7/16 Input Connector Power Dividers

MAIN CHARACTERISTICS

Band	52÷88 MHz	87.5÷108 MHz	174÷245 MHz	470÷860 MHz
Lengh approx.	2500 mm	1650 mm	890 mm	610 mm
Input power	6 kW	3 kW	2.5 kW	1.5 kW
Impedance	50 Ω			
V.S.W.R.	≤ 1.06			
Input connector	DIN 7/16 female			
Insertion Loss	≤ 0.1 dB			
Internal lines material	Silver plated Brass or Alluminium			
Outer conductor	Brass with protective paint			
Output connector	DIN 7/16 female or N female			



In-phase outputs.

Unbalanced output power dividers available on request.

Brackets for pole mounting (70 - 114mm) type ST-PS-78-158 (order separately). Power dividers for 174 - 242 MHz (DAB), available on request

BALANCED POWER DIVIDERS OUT 7/16 DIN						
Number of outputs	52 - 59.5 MHz	61 - 68 MHz	80 - 88 MHz	87.5 - 108 MHz	174 - 245 MHz	470 - 860 MHz
2	6132A	6132B	6132C	3142	1112	1251
3	6133A	6133B	6133C	3143	1113	1451
4	6134A	6134B	6134C	3144	1114	1301
5	6135A	6135B	6135C	3145	1115	1351
6	6136A	6136B	6136C	3146	1116	1401
8	6137A	6137B	6137C	3148	1118	1501

BALANCED POWER DIVIDERS OUT N						
Number of outputs	52 - 59.5 MHz	61 - 68 MHz	80 - 88 MHz	87.5 - 108 MHz	174 - 245 MHz	470 - 860 MHz
2	6142A	6142B	6142C	3152	1162	1252
3	6143A	6143B	6143C	3153	1163	1452
4	6144A	6144B	6144C	3154	1164	1302
5	6145A	6145B	6145C	3155	1165	1352
6	6146A	6146B	6146C	3156	1166	1402
8	6147A	6147B	6147C	3158	1168	1502