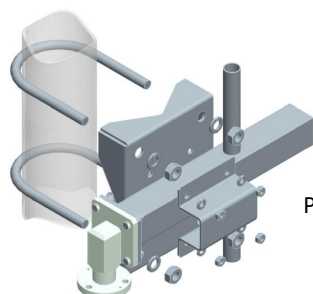
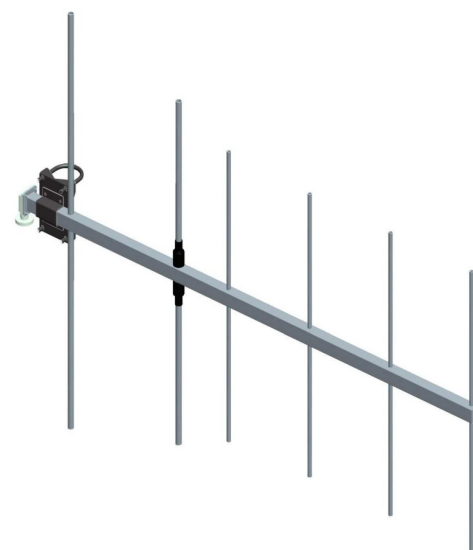


BAN0112FXA / BAN0112SXA

Six Elements Yagi Antenna

156 ÷ 174 MHz

Type	BAN0112FXA
ELECTRICAL	
Frequency	156 ÷ 174 MHz
Impedance	50 Ω Unbalanced
V.S.W.R. (R.L.)	< 1.35 (16.5 dB)
Gain	9.5 dBi
HPBW H-pattern	± 36°
HPBW V-pattern	± 27°
Polarization	Horizontal or Vertical
Max Power	See Below Table
Input Connector	N (f), 7-16 (f) din
Lightning Protection	DC Grounded
MECHANICAL	
Connector Material	Nickel Plated Brass
External Parts Material	Passivated Stainless Steel
Internal Lines Material	Polished Brass
Insulators Material	Virgin PTFE
Brackets and Hardware Material	Stainless Steel
Pressurization	Yes
Survival Wind Velocity	180 km/h
Wind load at 160 km/h Frontal	75 N
Wind load at 160 km/h Lateral	217 N
Dimensions	160 x 100 x 6 cm
Weight (incl. Brackets)	9.0 kg
Mounting System	See Below

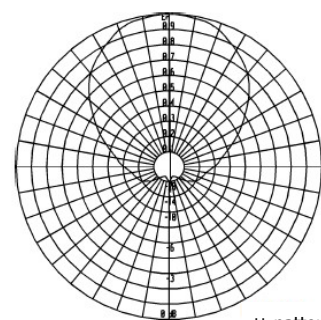


Pole Mount Ø 60÷114 mm

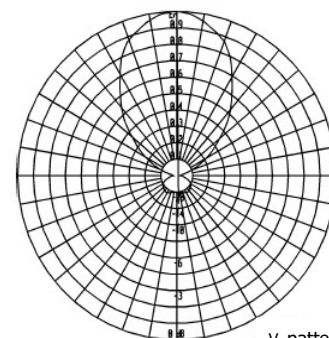
Ordering Information

p/n	Input Connector	Max Power	Lay Out
BAN0112FXA.00	N (f)	100W	fully welded
BAN0112FXA.01	7-16 (f) din	300W	fully welded
BAN0112SXA.00	N (f)	100W	dismountable
BAN0112SXA.01	7-16 (f) din	300W	dismountable

RADIATION PATTERN



H_pattern



V_pattern