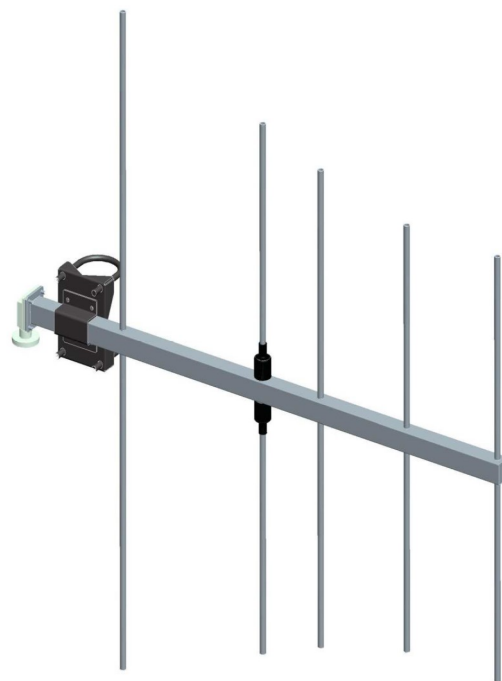


# BAN0114FXA

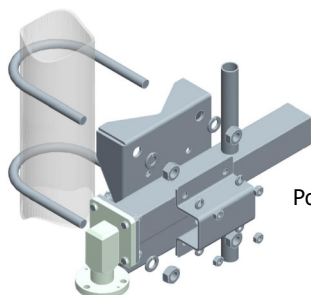
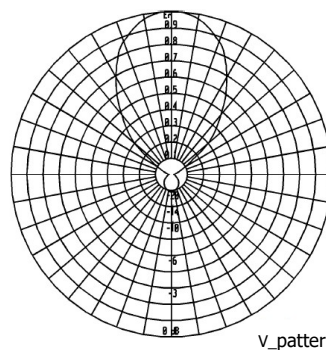
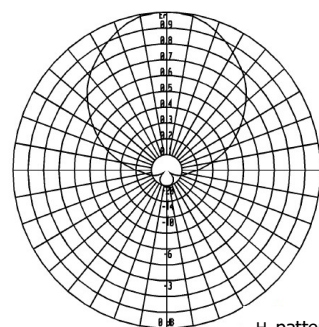
## Five Elements Yagi Antenna

156 ÷ 174 MHz

Type	BAN0114FXA
<b>ELECTRICAL</b>	
Frequency	156 ÷ 174 MHz
Impedance	50 Ω Unbalanced
V.S.W.R. (R.L.)	< 1.35 (16.5 dB)
Gain	9 dBi
HPBW H-pattern	± 47°
HPBW V-pattern	± 29°
Polarization	Horizontal or Vertical
Max Power	See Below Table
Input Connector	N (f), 7-16 (f) din
Lightning Protection	DC Grounded
<b>MECHANICAL</b>	
Connector Material	Nickel Plated Brass
External Parts Material	Passivated Stainless Steel
Internal Lines Material	Polished Brass
Insulators Material	Virgin PTFE
Brackets and Hardware Material	Stainless Steel
Pressurization	Yes
Survival Wind Velocity	180 km/h
Wind load at 160 km/h Frontal	70 N
Wind load at 160 km/h Lateral	203 N
Dimensions	117 x 110 x 6 cm
Weight (incl. Brackets)	8.0 kg
Mounting System	See Below



### RADIATION PATTERN



Pole Mount Ø 60÷114 mm

### Ordering Information

p/n	Input Connector	Max Power
BAN0114FXA.00	N (f)	100W
BAN0114FXA.01	7-16 (f) din	300W