

BAN014SX

Two Elements Yagi Antenna

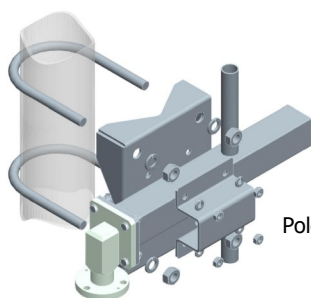
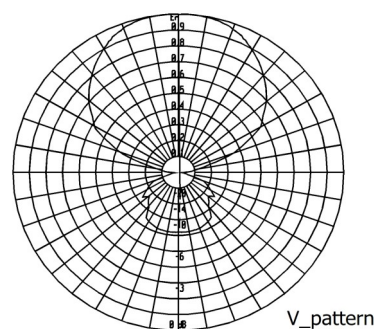
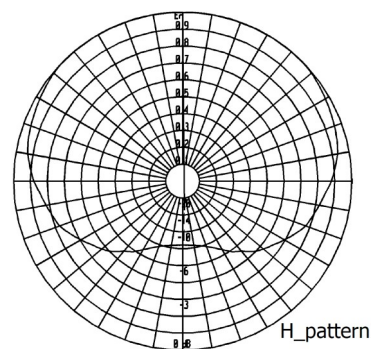
70 ÷ 80 MHz

Type	BAN014SX
ELECTRICAL	
Frequency	70 ÷ 80 MHz
Impedance	50 Ω Unbalanced
V.S.W.R. (R.L.)	< 1.50 (14.0 dB)
Gain	4.7 dBi
HPBW H-pattern	± 81°
HPBW V-pattern	± 35°
Front to Back	> 20 dB
Polarization	Horizontal or Vertical
Max Power	See Below Table
Input Connector	N (f), 7-16 (f) din
Lightning Protection	DC Grounded
MECHANICAL	
Connector Material	Nickel Plated Brass
External Parts Material	Passivated Stainless Steel
Internal Lines Material	Polished Brass
Insulators Material	Virgin PTFE
Brackets and Hardware Material	Stainless Steel
Pressurization	Yes
Survival Wind Velocity	180 km/h
Wind load at 160 km/h Frontal	184 N
Wind load at 160 km/h Lateral	230 N
Dimensions	207 x 135 x 13 cm
Weight (incl. Brackets)	10.0 kg
Mounting System	See Below



This antenna is dismountable and is shipped completely disassembled

RADIATION PATTERN



Pole Mount Ø 60÷114 mm

Ordering Information

p/n	Input Connector	Max Power
BAN014SX.00	N (f)	100W
BAN014SX.01	7-16 (f) din	300W