

# BAN0241AH1

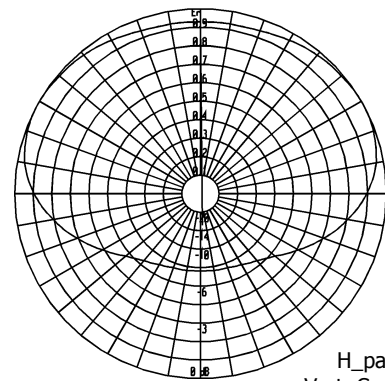
## FM Circular Polarization High Power Dipole

87.5÷108 MHz

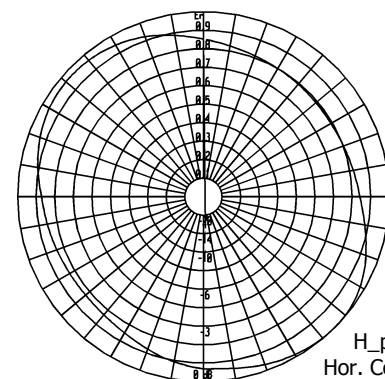
Type	BAN0241AH1
<b>ELECTRICAL</b>	
Frequency	87.5÷108 MHz
Impedance	50 Ω unbalanced
V.S.W.R. (R.L)	< 1.40 (-15.0 dB)
Gain	-1.5 dBd
Radiation Pattern	See Below
Polarization	Circular
Max power	See Below Table
Input connector	7/8" EIA , 1 5/8" eia
Lightning Protection	DC grounded
<b>MECHANICAL</b>	
Connector material	Nickel plated Brass
External parts material	Passivated Stainless Steel
Internal lines material	Silver plated Aluminum
Insulators material	Virgin PTFE
Brackets and Hardware material	Stainless Steel
Pressurization	Yes
Survival wind velocity	240 km/h
Wind load at 160 km/h Frontal	102 N
Wind load at 160 km/h Lateral	410 N
Dimensions	156 x 115 x 115 cm
Weight (incl. Brackets)	23.0 kg
Mounting System	See Below



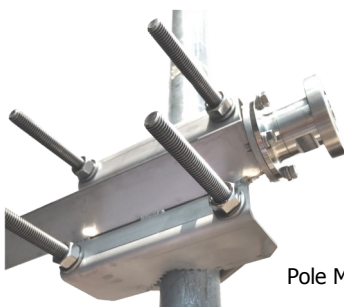
### RADIATION PATTERN



H\_pattern  
Vert. Component



H\_pattern  
Hor. Component



Pole Mount Ø 40÷114 mm

### Ordering Information

p/n	Input Connector	Max Power	Lay Out
BAN0241AH1.02	7/8" EIA	7.0 Kw	fully welded
BAN0241AH1.03	1 5/8" EIA	13.0 kW	fully welded