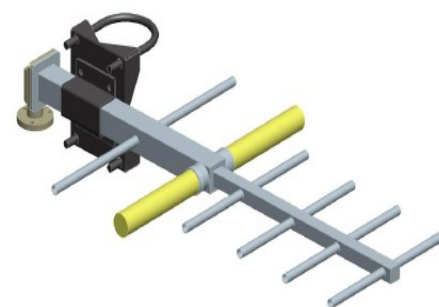


BAN05FX

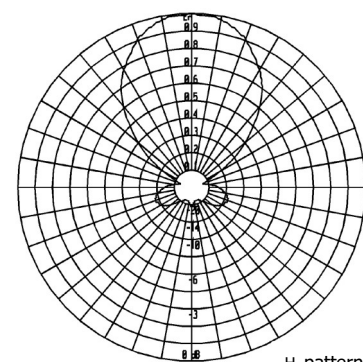
Six Elements Yagi Antenna

360 ÷ 470 MHz

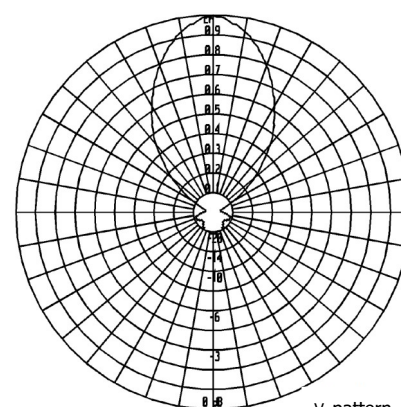
Type	BAN05CFX	BAN05BFX	BAN05AFX
ELECTRICAL			
Frequency	360 ÷ 400 MHz	360 ÷ 435 MHz	435 ÷ 470 MHz
Impedance	50 Ω Unbalanced		
V.S.W.R. (R.L.)	< 1.40 (15.6 dB)		
Gain	9 dBi		
HPBW H-pattern	± 38°		
HPBW V-pattern	± 26°		
Polarization	Horizontal or Vertical		
Max Power	See Below Table		
Input Connector	N (f), 7-16 (f) din		
Lightning Protection	DC Grounded		
MECHANICAL			
Connector Material	Nickel Plated Brass		
External Parts Material	Passivated Stainless Steel		
Internal Lines Material	Polished Brass		
Insulators Material	Virgin PTFE		
Brackets and Hardware Material	Stainless Steel		
Pressurization	Yes		
Survival Wind Velocity	180 km/h		
Wind load at 160 km/h Frontal	47 N	42 N	40 N
Wind load at 160 km/h Lateral	128 N	118 N	110 N
Dimensions	84 x 48 x 6 cm	79 X 42 X 7 cm	75 x 39 x 6 cm
Weight (incl. Brackets)	4.9 kg	4.6 kg	4.3 kg
Mounting System	See Below		



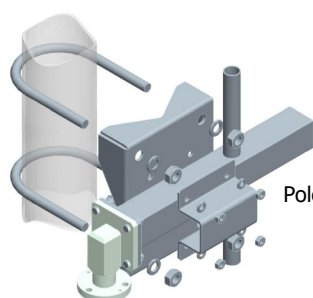
RADIATION PATTERN



H_pattern



V_pattern



Pole Mount Ø 60÷114 mm

Ordering Information

p/n	Input Connector	Max Power
BAN05FX.00	N (f)	100W
BAN05FX.01	7-16 (f) din	300W