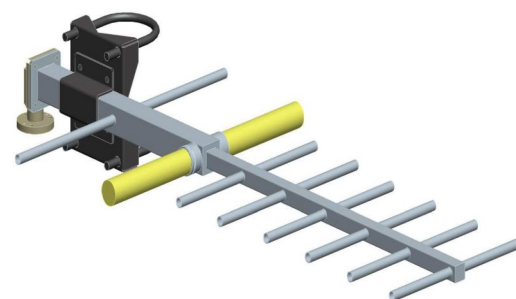


BAN083FX

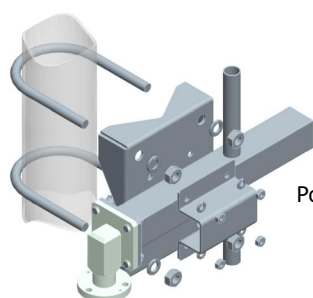
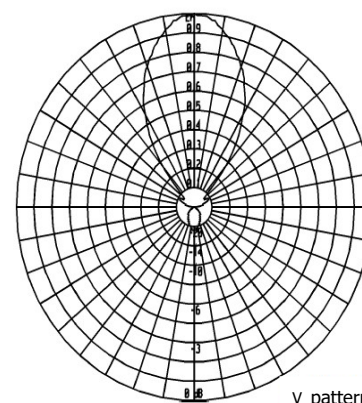
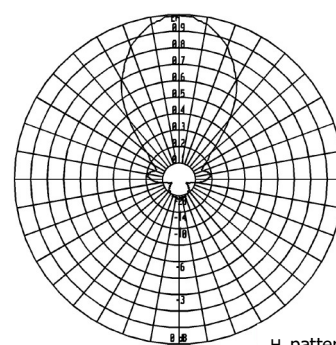
Eight Elements Yagi Antenna

360 ÷ 470 MHz

Type	BAN083CFX	BAN083BFX	BAN083AFX
ELECTRICAL			
Frequency	360 ÷ 400 MHz	400 ÷ 435 MHz	435 ÷ 470 MHz
Impedance	50 Ω Unbalanced		
V.S.W.R. (R.L.)	< 1.40 (15.6 dB)		
Gain	10 dBi		
HPBW H-pattern	± 30°		
HPBW V-pattern	± 24°		
Polarization	Horizontal or Vertical		
Max Power	See Below Table		
Input Connector	N (f), 7-16 (f) din		
Lightning Protection	DC Grounded		
MECHANICAL			
Connector Material	Nickel Plated Brass		
External Parts Material	Passivated Stainless Steel		
Internal Lines Material	Polished Brass		
Insulators Material	Virgin PTFE		
Brackets and Hardware Material	Stainless Steel		
Pressurization	Yes		
Survival Wind Velocity	180 km/h		
Wind load at 160 km/h Frontal	59 N	54 N	50 N
Wind load at 160 km/h Lateral	160 N	150 N	110 N
Dimensions	106 x 46 x 6 cm	99 x 42 x 7 cm	93 x 39 x 6 cm
Weight (incl. Brackets)	5.0 kg	4.8 kg	4.5 kg
Mounting System	See Below		



RADIATION PATTERN



Pole Mount Ø 60÷114 mm

Ordering Information

p/n	Input Connector	Max Power
BAN083.00	N (f)	100W
BAN083.01	7-16 (f) din	300W