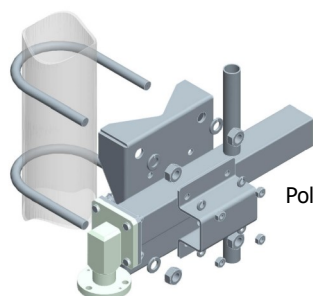
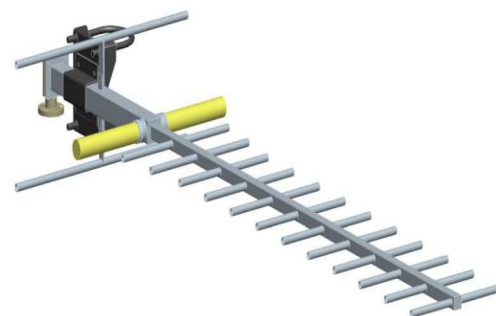


# BAN086FX

## Fourteen Elements Yagi Antenna

360 ÷ 470 MHz

Type	BAN086CFX	BAN086BFX	BAN086AFX
<b>ELECTRICAL</b>			
Frequency	360 ÷ 400 MHz	400 ÷ 435 MHz	435 ÷ 470 MHz
Impedance	50 Ω Unbalanced		
V.S.W.R. (R.L.)	< 1.40 (15.6 dB)		
Gain	12 dBi		
HPBW H-pattern	± 20°		
HPBW V-pattern	± 18°		
Polarization	Horizontal or Vertical		
Max Power	See Below Table		
Input Connector	N (f), 7-16 (f) din		
Lightning Protection	DC Grounded		
<b>MECHANICAL</b>			
Connector Material	Nickel Plated Brass		
External Parts Material	Passivated Stainless Steel		
Internal Lines Material	Polished Brass		
Insulators Material	Virgin PTFE		
Brackets and Hardware Material	Stainless Steel		
Pressurization	Yes		
Survival Wind Velocity	180 km/h		
Wind load at 160 km/h Frontal	80 N		
Wind load at 160 km/h Lateral	238 N	235 N	223 N
Dimensions	165 x 50 x 20 cm	162 x 50 x 20 cm	149 x 50 x 20 cm
Weight (incl. Brackets)	7.3 kg	7.0 kg	6.5 kg
Mounting System	See Below		

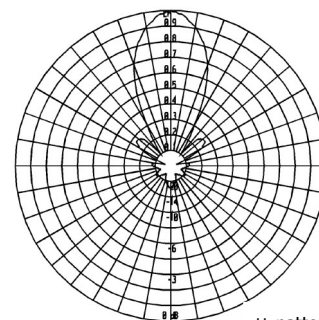


Pole Mount Ø 60÷114 mm

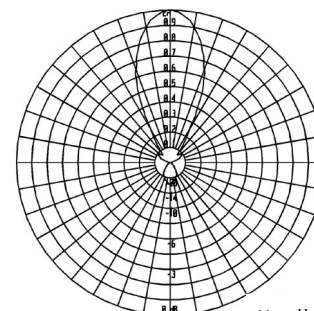
### Ordering Information

p/n	Input Connector	Max Power
BAN086FX.00	N (f)	100W
BAN086FX.01	7-16 (f) din	300W

### RADIATION PATTERN



H\_pattern



V\_pattern