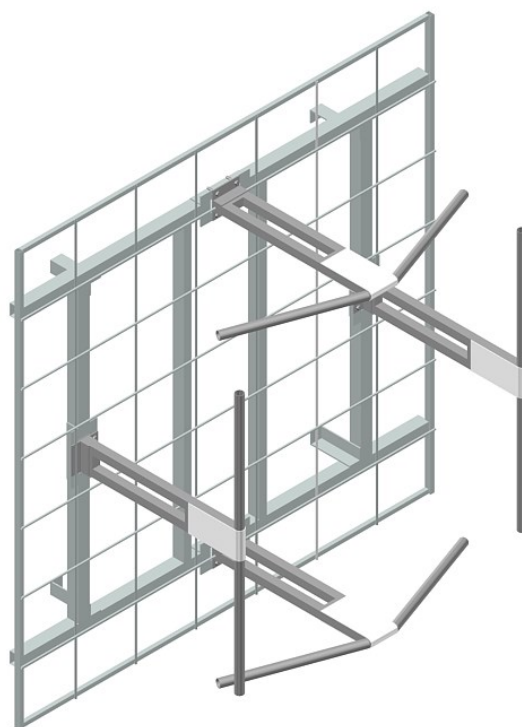


BAN2100

FM Circular Polarized Panel

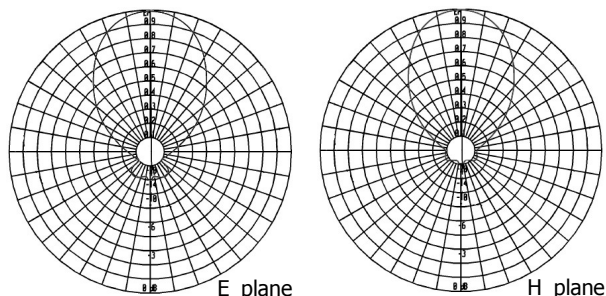
87.5÷108 MHz

| Type | BAN2100 |
|-----------------------------------|--------------------------------|
| ELECTRICAL | |
| Frequency | 87.5÷108 MHz |
| Impedance | 50 Ω unbalanced |
| V.S.W.R. (R.L) | < 1.1 (-26.5 dB) (circ. pol.) |
| Gain Linear Pol. / Circular Pol. | 7.5 dBd / 4.5 dBd |
| HPBW Hor. Pol. E-plane / H-plane | ± 66° / ±62 |
| HPBW Vert. Pol. E-plane / H-plane | ± 64° / ±62 |
| Polarization | Linear / Circular / Elliptical |
| Max power | See Below Table |
| Input connector (x 4) | 7/16 (f) din , 7/8" EIA |
| Lightning Protection | DC grounded |
| MECHANICAL | |
| Connector material | Nickel plated Brass |
| External parts material (Screen) | Hot dip galvanised Steel |
| External parts material (Dipoles) | Passivated Stainless Steel |
| Internal lines material | Silver plated Aluminum |
| Insulators material | Virgin PTFE |
| Mounting Hardware material | Stainless Steel |
| Pressurization | yes |
| Environment Protection | U.V. resistant ABS Radome |
| Survival wind velocity | 240 km/h |
| Wind load at 160 km/h Frontal | 1600 N |
| Wind load at 160 km/h Lateral | 980 N |
| Dimensions | 220 x 220 x 100 cm |
| Weight | 98.0 kg |
| Mounting System | See Below |

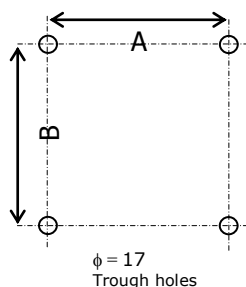
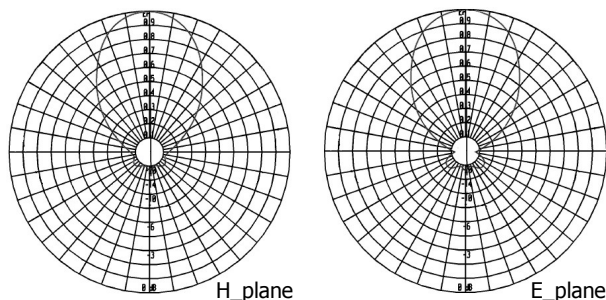


RADIATION PATTERN

Horizontal Polarization



Vertical Polarization



MOUNTING SYSTEM

On frame according to the mounting lay-out beside, where:

A = 1400 mm
B = 1400 mm

Pole mount available on request.

Ordering Information

| p/n | Input Connector | Max Power |
|------------|-----------------|-------------------------|
| BAN2100.01 | 7/16 (f) | 3.5 kW (each connector) |
| BAN2100.02 | 7/8" EIA | 5.0 kW (each connector) |