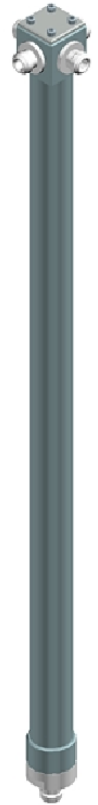


N Input Connector Power Dividers

MAIN CHARACTERISTICS

Band	52÷88 MHz	87.5÷108 MHz	174÷245 MHz	470÷860 MHz
Length approx.	2.400 mm	1.650 mm	950 mm	610 mm
Input power	2 kW	0.8 kW	0.5 kW	0.3 kW
Impedance	50 Ω			
V.S.W.R.	≤ 1.10			
Input connector	N Female			
Insertion Loss	≤ 0.12 dB			
Internal lines material	Silver plated Brass or Alluminium			
Outer conductor	Brass with protective paint			
Output connector	N female			



In-phase outputs.

Unbalanced output power dividers available on request.

Brackets for pole mounting (70 - 114mm) type ST-PS-78-158 (order separately). Power dividers for 174 - 242 MHz (DAB), available on request

BALANCED POWER DIVIDERS OUT N						
Number of outputs	52 - 59.5 MHz	61 - 68 MHz	80 - 88 MHz	87.5 - 108 MHz	174 - 245 MHz	470 - 860 MHz
2	6122A	6122B	6122C	3162	1102	1202
3	6123A	6123B	6123C	3163	1103	1203
4	6124A	6124B	6124C	3164	1104	1204